

OXFORD CAMBRIDGE AND RSA EXAMINATIONS

Tuesday 4 June 2019 – Afternoon

GCSE (9–1) Music

J536/05 Listening and Appraising

Insert

**Time allowed: 1 hour 30 minutes
plus your additional time allowance**

Please write clearly in black ink.

Centre number

--	--	--	--	--

Candidate number

--	--	--	--

First name(s) _____

Last name _____

READ INSTRUCTIONS OVERLEAF



INSTRUCTIONS

Use black ink or pencil.

Write your answer in the space provided.

BLANK PAGE

For use with Question 5

① ②

I heard he sang a good song

③ ④

I heard he had a style

⑤ ⑥

And so I came to see him to

⑦ ⑧

list - en for a while

⑨ ⑩

And there he was this young boy

⑪ ⑫

a stran-ger to___ my_ eyes____

⑬ ⑭

Strum-ming my pain_ with his fing - ers,____

⑮ ⑯

Sing-ing my life_ with his words.____

⑰

Kill - ing me soft - ly with his____

⑱ ⑲

___song, Kill-ing me soft - ly_ with his_

(20)  (21)

— song— Tell-ing my whole— life— with his—

(22)  (23)

24

with his

25

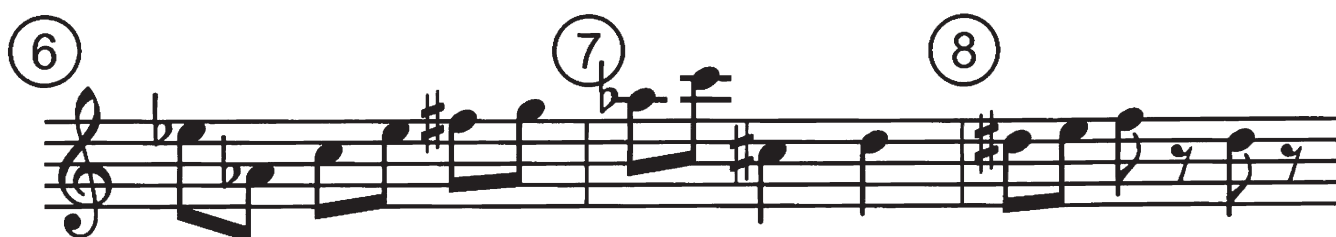
song

For use with Question 7

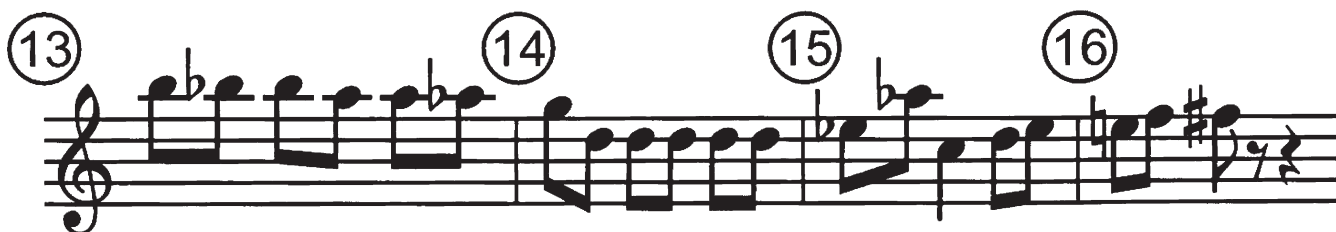
ci: melody instrument



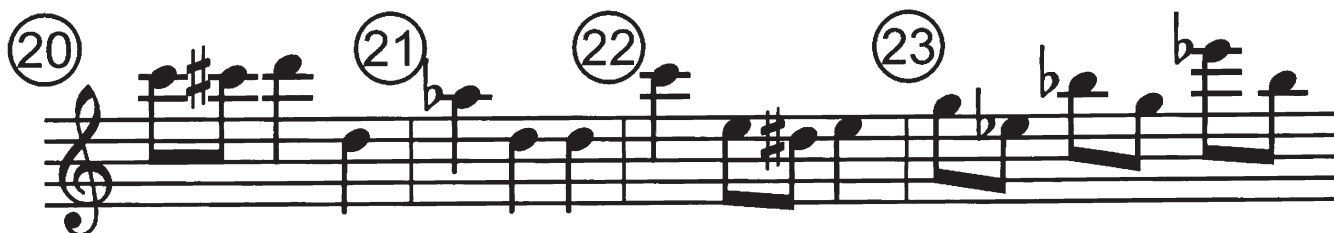
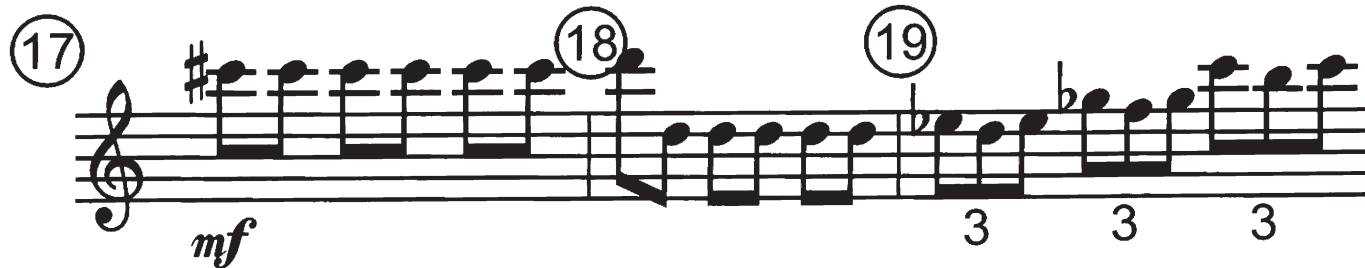
b: time signature



cii: percussion



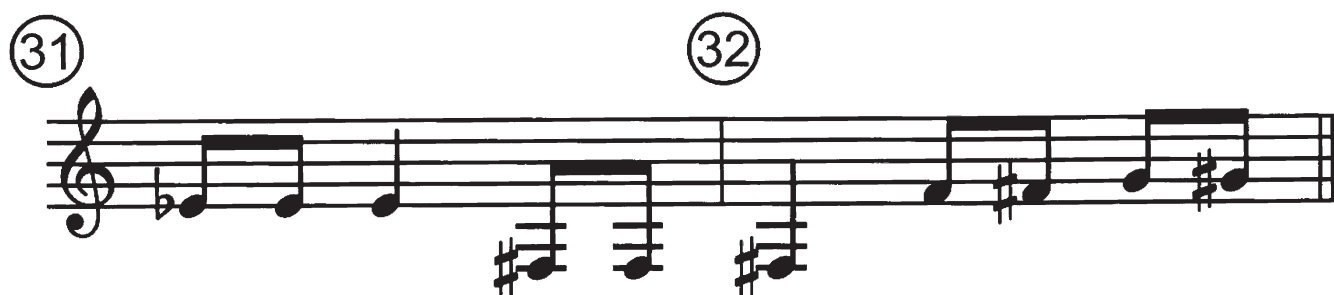
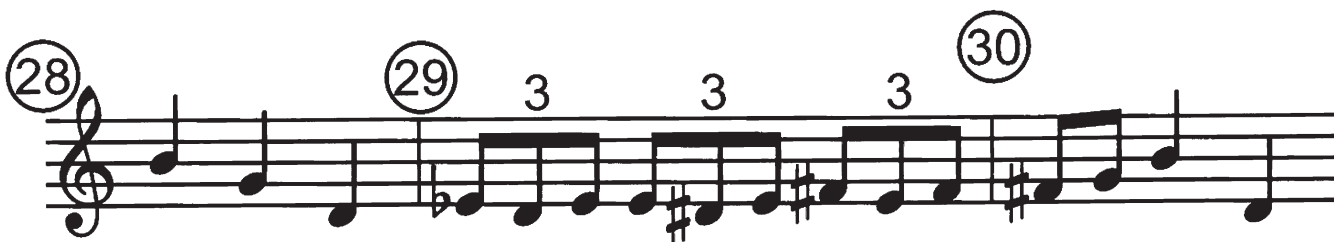
e: accidental



ciii: melody instrument



f: dynamic



BLANK PAGE

BLANK PAGE

BLANK PAGE



Copyright Information

OCR is committed to seeking permission to reproduce all third-party content that it uses in its assessment materials. OCR has attempted to identify and contact all copyright holders whose work is used in this paper. To avoid the issue of disclosure of answer-related information to candidates, all copyright acknowledgements are reproduced in the OCR Copyright Acknowledgements Booklet. This is produced for each series of examinations and is freely available to download from our public website (www.ocr.org.uk) after the live examination series.

If OCR has unwittingly failed to correctly acknowledge or clear any third-party content in this assessment material, OCR will be happy to correct its mistake at the earliest possible opportunity.

For queries or further information please contact The OCR Copyright Team, The Triangle Building, Shaftesbury Road, Cambridge CB2 8EA.

OCR is part of the Cambridge Assessment Group; Cambridge Assessment is the brand name of University of Cambridge Local Examinations Syndicate (UCLES), which is itself a department of the University of Cambridge.